

# LogTag

## TRIX-16 TEMPERATURE RECORDER



The LogTag Temperature Recorder incorporates an external temperature sensor uniquely arranged in a recess in the case. This design protects the sensor from damage but still provides a fast reaction time more associated with remote temperature sensors.

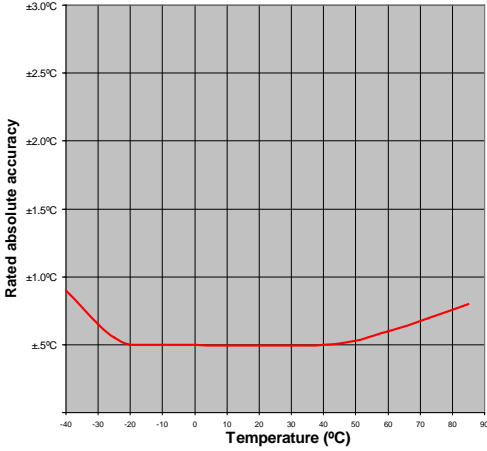
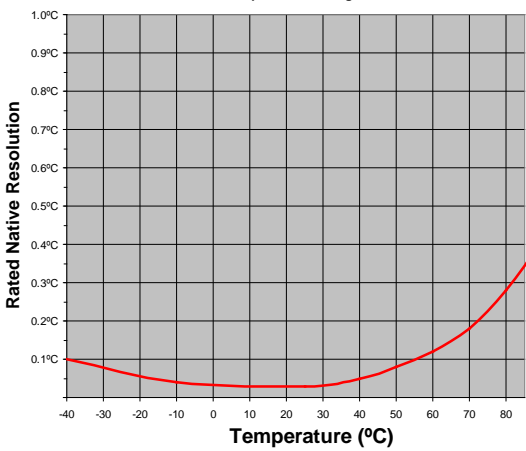
Using the LogTag Interface and LogTag's freely available companion software *LogTag Analyser*, the LogTag is easily set-up for recording conditions including delayed start, sampling interval, number of readings, continuous or fixed number of readings and configuration of conditions to activate the *ALERT* indicator.

Readings are downloaded using LogTag Analyser which provides facilities for charting, zooming, listing data statistics and allows exporting the data to other applications such as Excel.

### Product Highlights

- **Alert indicator** – indicates if readings are outside of preset limits
- **OK indicator** indicates if still recording and if readings within configured limits
- **Inspection mark** in log by push button
- **Push Button Logging start**
- **Rapid Download!** Takes only seconds to download recordings
- **'Pre-Start' logging** - Logtag can be configured to record *even if it has not been started*.
- **High performance** at low cost
- **Credit card sized case** – thin enough to be easily mailed "letter rate".
- **Real time clock** records time & temperature simultaneously
- **Easy** to use *LogTag Analyser* software that runs on any PC configures LogTag for recording then downloads resulting data for analysis. Data can also be exported to formats compatible with other applications such as Excel
- **Highly reliable** and accurate
- Re-calibration to achieve higher accuracy possible

# LogTag TRIX-16 Technical Specifications

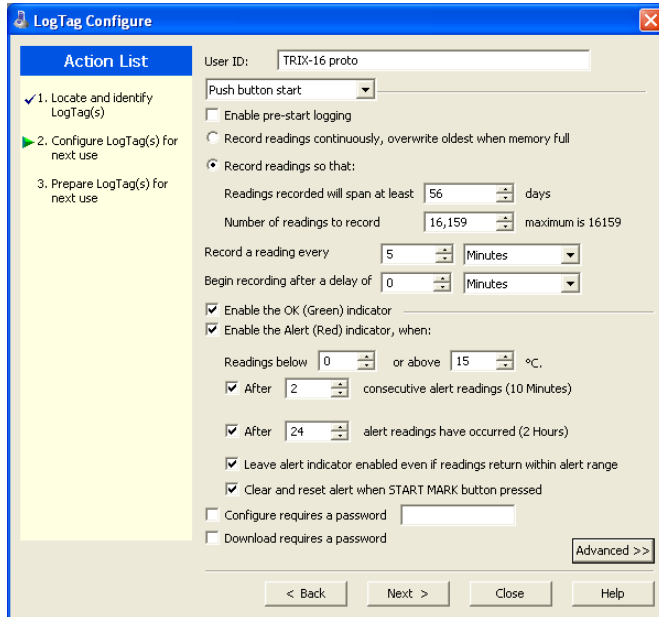
<b>Part Order Code</b>	TRIX-16
<b>Temperature Sensor Measurement range</b>	-40 ~ +85°C (-40°F ~ +185°F)
<b>Recorder operating temperature range</b>	-40 ~ +85°C (-40°F ~ +185°F)
<p><b>Rated Temperature reading accuracy</b>*</p> <p>±0.5°C for -10°C~ +40°C  better than ±0.7°C for -10°C~ -30°C &amp; +40°C~+60°C  better than ±0.8°C for -30°C~ -40°C &amp; +60°C~+80°C</p> <p><b>LogTag TRIX Temperature Recorder</b>  Rated Temperature reading accuracy</p>  <p>The graph shows 'Rated absolute accuracy' on the y-axis (ranging from ±0.5°C to ±3.0°C) and 'Temperature (°C)' on the x-axis (ranging from -40 to 90). A red curve starts at approximately ±0.8°C at -40°C, drops to ±0.5°C at -20°C, remains constant at ±0.5°C until 50°C, and then rises to approximately ±0.8°C at 90°C.</p>	<p><b>Rated Temperature reading resolution</b>#</p> <p>less than 0.1°C for -40°C ~ +40°C,  less than 0.2°C for +40°C ~ +80°C</p> <p><b>LogTag TRIX Temperature Recorder</b>  Rated native temperature reading resolution</p>  <p>The graph shows 'Rated Native Resolution' on the y-axis (ranging from 0.1°C to 1.0°C) and 'Temperature (°C)' on the x-axis (ranging from -40 to 80). A red curve starts at 0.1°C at -40°C, dips slightly to about 0.08°C at -20°C, remains flat until 30°C, and then rises to approximately 0.35°C at 80°C.</p>
<p>* Actual performance is normally much better than the rated values.</p> <p>Accuracy figures can be improved by recalibration.</p>	<p># LogTag Analyser currently displays to one decimal place of °C or °F. The native resolution is what is stored in the LogTag.</p>
<b>Capacity</b>	16159 temperature readings (32Kbytes memory)
<b>Sampling frequency</b>	adjustable, 30 sec to several hours
<b>Download Time</b>	Typically with full memory in less than 10 seconds depending on computer or readout device used.
<b>Environmental</b>	IP65
<b>Power source</b>	3V Lithium - replaceable by qualified technician
<b>Battery life</b>	2~3 years typical use – longer (up to 5-10 years) if recorder is hibernated between uses.
<b>Size</b>	86mm(H)x54.5mm(W)x8.6mm(T)
<b>Weight</b>	35grams
<b>Case Material</b>	Polycarbonate
<b>EMC Compliance</b>	Tested and complies with EC EMC directives (EN 50081-1:1992 & EN 61000-6-1:2001)

NOTE: INFORMATION AND SPECIFICATIONS SUBJECT TO CHANGE  
LogTag Recorders Ltd reserves the right to change this product's specifications without notice.  
Copyright © 2010, LogTag Recorders Limited. All Rights Reserved

# TRIX-16 enhanced alert configuration

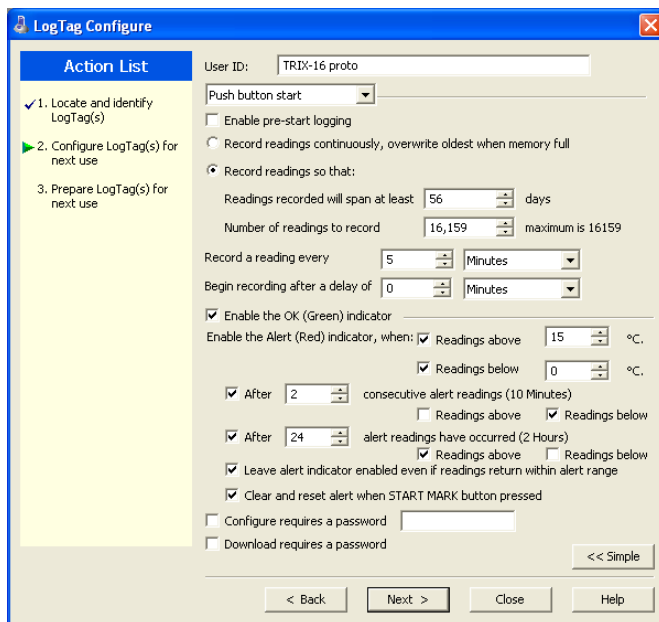
The TRIX-16 supports simple or advanced alert configuration options.

In 'simple mode' the TRIX-16 configuration dialogue displays the standard alert configuration options.



In this simple mode consecutive or accumulative alerts apply to both upper and lower alert triggers.

If the user clicks on the *Advanced*>> button a more complex dialogue appears ..



In this advanced mode it is possible to associate a given consecutive or accumulative alert to just an upper or lower alert trigger.

An example of a typical application that this advanced alert configuration supports would be a live vaccine where a freezing alert (i.e less than say 0°C) requires either an instant or short consecutive alert trigger and a longer accumulative upper alert trigger.

The above dialogue examples displays an alert configuration that has a low temperature trigger if the temperature falls below 0°C for more that 10minutes and a high temperature trigger if the total accumulated time above 15°C exceeds 2 hours.