

## What's new in LogTag Analyser version 1.5?

28<sup>th</sup> June 2007 - relates to LogTag Analyser 1.5 release 11

We have made some significant improvements to the functionality of LogTag Analyser software in the new version 1.5 release. Some behaviour you may be used to has changed slightly, so we have compiled this information sheet for those who are already familiar with version 1.4.

For more details on each feature please refer to the corresponding section in your LogTag Analyser User Guide.

### Preparing LogTags for use

LogTags can now also be configured to start on a specific date and time, rather than just via the start button. This gives ultimate flexibility where the number of recordings is critical and there is a delay between configuring the LogTag and the time of starting the recording.

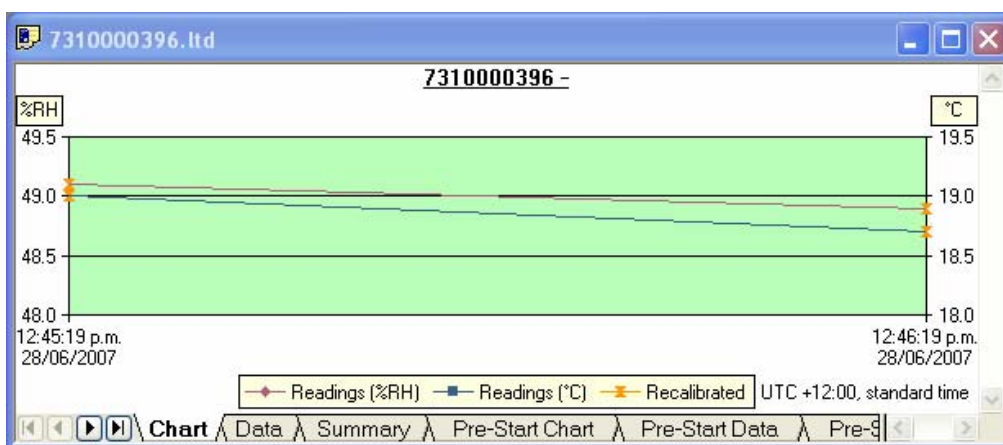
- Use the drop down box in the Configuration screen to select "Date/Time start" and enter the desired time and date up to a maximum of 6 months in the future. Please note, that the start time must be at least 2 minutes from the time the LogTag is programmed. The time defaults to a full minute start, but this can be manually changed if so desired.

The screenshot shows the 'LogTag Configure' dialog box. On the left is an 'Action List' with three steps: 1. Locate and identify LogTag(s) (checked), 2. Configure LogTag(s) for next use (highlighted), and 3. Prepare LogTag(s) for next use. The main configuration area includes: User ID: Freezer; Date/Time start: a dropdown menu; Begin recording at: 28/06/2007 at 5:35:00 p.m.; Recording mode: 'Record readings so that:' (selected) with options for span (1 day) and number of readings (1,440); Recording frequency: 1 Minute; Delay before recording: 0 Minutes; Indicators: 'Enable the OK (Green) indicator' (checked), 'Enable the Alert (Red) indicator, when:' (unchecked) with alert range (below -38 or above 80 °C) and duration (1 consecutive alert readings); Password: 'Configure requires a password' (unchecked).

## Results from LogTags

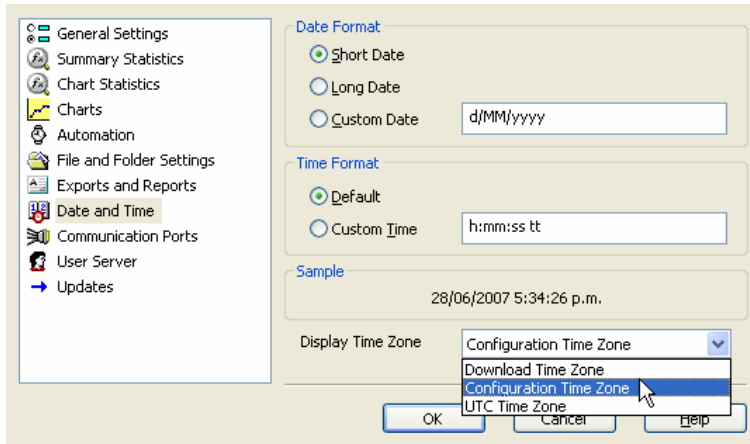
We have made some changes to the way charts are presented.

- Annotations in a chart can now be saved with the chart. To preserve the integrity of the LogTag data files, this is done in an ancillary file with the same name as the data file, but with an “.anno” extension. If you delete this file you will also delete all annotations to the chart.
- Non-validated readings are no longer automatically displayed in a different colour on the chart. You can still elect to show these readings differently, but to do so you will have to use a special setting in “Options – Charts”. Highlight “Non-validated readings” and select “Display non-validated readings differently”. This setting is saved when you exit Analyzer.
- LogTags can read far beyond their specified limits, but the accuracy of those readings cannot be guaranteed. We believe the ability to display these readings is a valuable feature for identifying specific issues (i.e. detecting if the external sensor of a TREX-8 was removed), but since the readings could potentially be inaccurate we have decided to no longer automatically display readings outside the sensor’s published specifications. You can turn this feature on by selecting “Options – Charts” and ticking “Show Readings beyond specification”. For reasons explained above this setting will not be saved when you exit Analyzer. Similarly, in the data section those readings are now marked as being outside the sensor limits, and the statistics won’t be calculated if they cover an area containing such readings. The same tick box as above in “Options – Charts” controls these settings.
- If a LogTag has been re-calibrated and is read back into Analyser, readings that were recorded before the recalibration are specially marked as "recalibrated" and displayed with an orange hourglass marker. This can not be configured and is done to avoid data manipulation.



You can now also view the data in the timezone in which a LogTag has been configured or in UTC :

- Select “Options – Date and Time”. There is now a drop down box which lets you decide whether you wish to see the readings in local time, origination time or GMT (UTC).



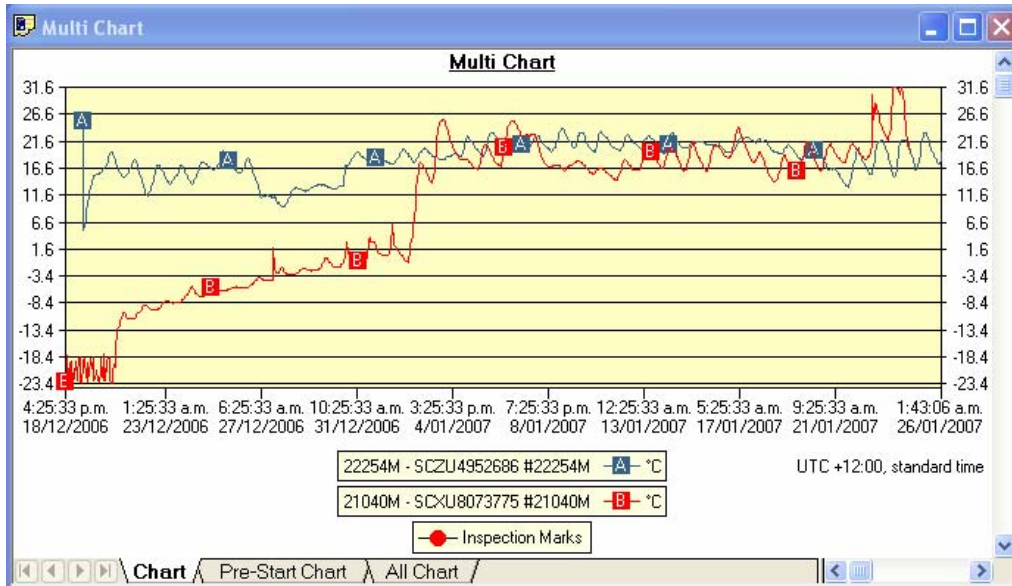
- When you export a file, the times are reflective of the chosen display time zone.

LogTags can be configured to stop recording when they are downloaded. In previous Analyzer versions you could turn off the relevant warning message. In version 1.5 this warning can no longer be disabled and will appear for every LogTag so configured. We feel that preventing the chance of data loss outweighs the inconvenience for some users who process a large number of LogTags in such a state.

## Multi Charts

We have improved the information you can get from a multi Chart:

- Charts within a multi chart can be allocated a different colour by right clicking and selecting “change chart colour” from the context menu, which will allow setting new colours for readings and markers.

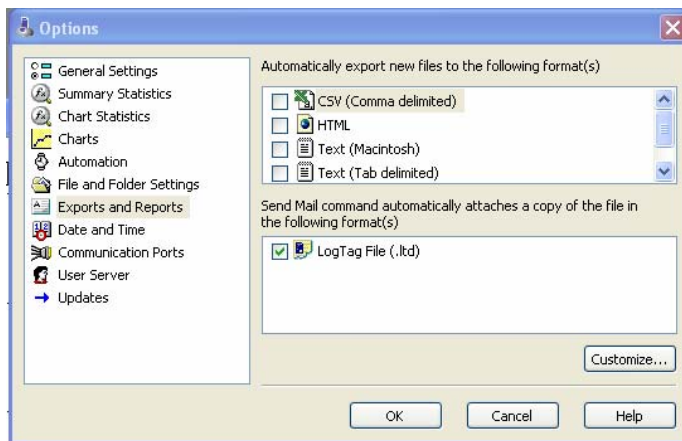


- Any chart within a Multi chart can now be shifted in time. This will allow better comparison of data for similar trips at different times. Time shifting can be done by both holding CTRL button and dragging a chart along the time line with the mouse, or by right clicking and selecting “shift chart” from the context menu, which will allow entering the new time parameters for the chart. Different time scales will appear at the bottom of the multi chart window for the different charts.
- All of the configurations made in a Multi chart can now be saved, including titles, annotations, chart colours and time shifts. Saving a multi chart will automatically add the “.multi” extension.
- Select “.ltd” or “.multi” in the file open dialogue to open single or multi charts directly.

## Exporting Data

LogTag data can now be attached to e-mails in more than one format:

- Select between “.ltd”, “.CSV” and “.html” files
- Customise export data further with the “customise” button, e.g. choose to “Always include pre-start data”, “Column headings” and select the values you wish to export for “readings beyond specifications”.



- E-mail multi charts

## Utilities

- USB driver installation has sometimes caused difficulties. In this version selecting “Help – Re-install USB drivers...” will guide you through the process of USB driver re-installation in case you experience any issues with your set-up.
- Clicking multiple files in Windows Explorer will now directly open those files in Analyzer. You can also drag files directly into Analyzer or onto the Analyzer logo on the task bar and open e-mail attachments directly.
- Never miss a new release of Analyzer – you can set automatic update checks in “Options - Updates”

