

25th June 2009 - relates to LogTag Analyzer 1.9 release 8 (doc ver 1)


LogTag Connectivity Upgrade

LogTag Analyzer now has the ability to automatically process data once downloaded from the logger. The data files created can now be automatically e-mailed to a list of recipients of your choice without the need for using an e-mail program. Files can also automatically be uploaded to an FTP server for easy central data collation from multiple sites.

Automatic e-mailing and automatic uploading to FTP sites

In the same way that LogTag Analyzer files are saved to a local hard drive, they can be automatically uploaded to an FTP site and automatically be e-mailed every time data from a LogTag are downloaded. FTP (File Transfer Protocol) is a standard which describes how files are transferred between different computers and networks. SMTP (Simple Mail Transfer Protocol) is used for e-mail and describes how electronic mail is distributed across networks.

The screenshot shows a dialog box with two sections. The first section is titled "Email downloaded files:" and contains two radio buttons: "automatically" (which is selected) and "on request". To the right of these buttons is a button labeled "Email settings". The second section is titled "Upload downloaded files to FTP Server:" and contains two radio buttons: "automatically" (which is selected) and "on request". To the right of these buttons is a button labeled "FTP settings".

Settings are made in the Automation dialogue accessible from the "EDIT" - "OPTIONS" menu, where you can select for both e-mail and FTP whether you wish to make the process automatic, on request, or both. A globe symbol  in the toolbar indicates which setting is currently active.

Clicking on the FTP or E-mail settings buttons brings up the dialogue windows for the **Basic FTP settings** or the **Basic SMTP and e-mail settings**. Please refer to the section about Automation on page 83 in the LogTag Analyzer User Guide 1.9 for further details on how to adjust these settings.

When uploading or e-mailing files a status window is displayed at the bottom of the LogTag Analyzer window to keep you up to date about the progress. This window can be hidden if desired.

Server	File name	Upload/Send Status
smtp.yourisp.com		Disconnected
smtp.yourisp.com	6000017083 Started 12-05-2009, Finished 14-05-2009 Copy 2.ltd	Successful
ftp.yourftpsite.com		Disconnected
ftp.yourftpsite.com	6000017083 Started 12-05-2009, Finished 14-05-2009 Copy 2.ltd	Successful
smtp.yourisp.com		Disconnected
smtp.yourisp.com	6000017083 Started 12-05-2009, Finished 14-05-2009 Copy 2.ltd	Successful

For Help, press F1. To use a LogTag, press F2.

Note: The e-mail function described here is different from the "send mail" button on the toolbar. The "send mail" button invokes your standard e-mail program, attaches the data file, requires you to fill in an e-mail address and press the send button. The e-mail function via SMTP does not use your standard e-mail program, but the configured SMTP settings and requires no further action once the globe button on the toolbar is pressed.

LogTag Connectivity Distribution

Some users may experience difficulties entering the correct parameters for automated FTP uploads and automatic SMTP mailer settings, in some instances a Network Administrator may even wish to prevent the changing of these settings by standard users.

For those situations, Network Administrators can create a file containing FTP upload and SMTP mailer settings for individual users, which will be imported automatically into LogTag Analyzer on start-up and replace the settings already present in the Options for Automation.

Creating such settings files requires a tool called LogTag Settings Editor, which is available through your distributor.

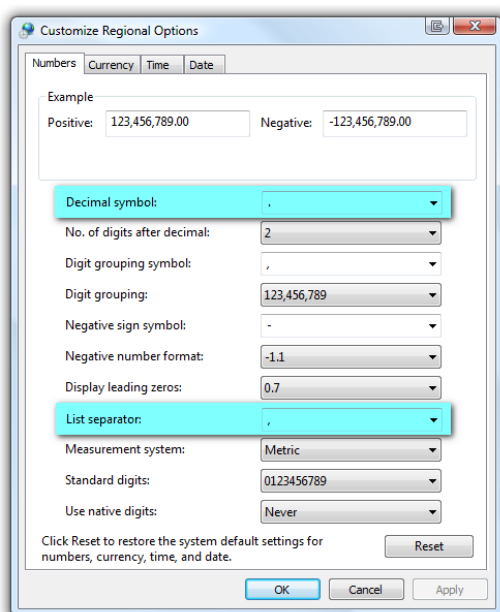
The LogTag Settings Editor has the same controls as they are present in the Option - Automation window for the FTP upload and SMTP mailer settings, with additional controls to save and load settings files suitable for distribution.

Please refer to the section about "Simple Distribution of FTP/SMTP settings" on page 123 in the LogTag Analyzer User Guide 1.9 for further details.

LogTag CSV Export Upgrade

This upgrade will mostly benefit our International Customers.

Displaying, Exporting and Saving list files to the *.csv format now all use the Regional Settings from the Windows™ Operating System for list separators and decimal symbols. This means you can now copy and paste directly from Analyzer into Microsoft Excel spreadsheets, and also open the exported *.csv files directly from within Excel, without having to use cumbersome conversion methods to get the file into the right format before exporting.



Please note for some countries such as France or Germany the resulting file is now strictly speaking no longer a "CSV" file. We believe, however, that the added convenience of the direct import into Excel outweighs this.