

Thursday, 8 December 2011 - relates to LogTag Analyzer Version 2.2 (R20)

We are pleased to announce the latest update for LogTag Analyzer, now released as version 2.2. This release is packed with new features and improved functionality, which will change the way you use the software and our products.

We have compiled this information sheet for those who have already used earlier versions and wish to familiarise themselves with the new functionality of version 2.2.

Please also refer to the LogTag Analyzer User Guide, which can be found in the **HELP** menu of the LogTag Analyzer software. Both User Guide and Help File have undergone some changes as we continue to serve your needs of concise and accurate information about our products.

Report Display

The Report display provides a convenient and quick way of seeing all important information for a trip in one single screen.

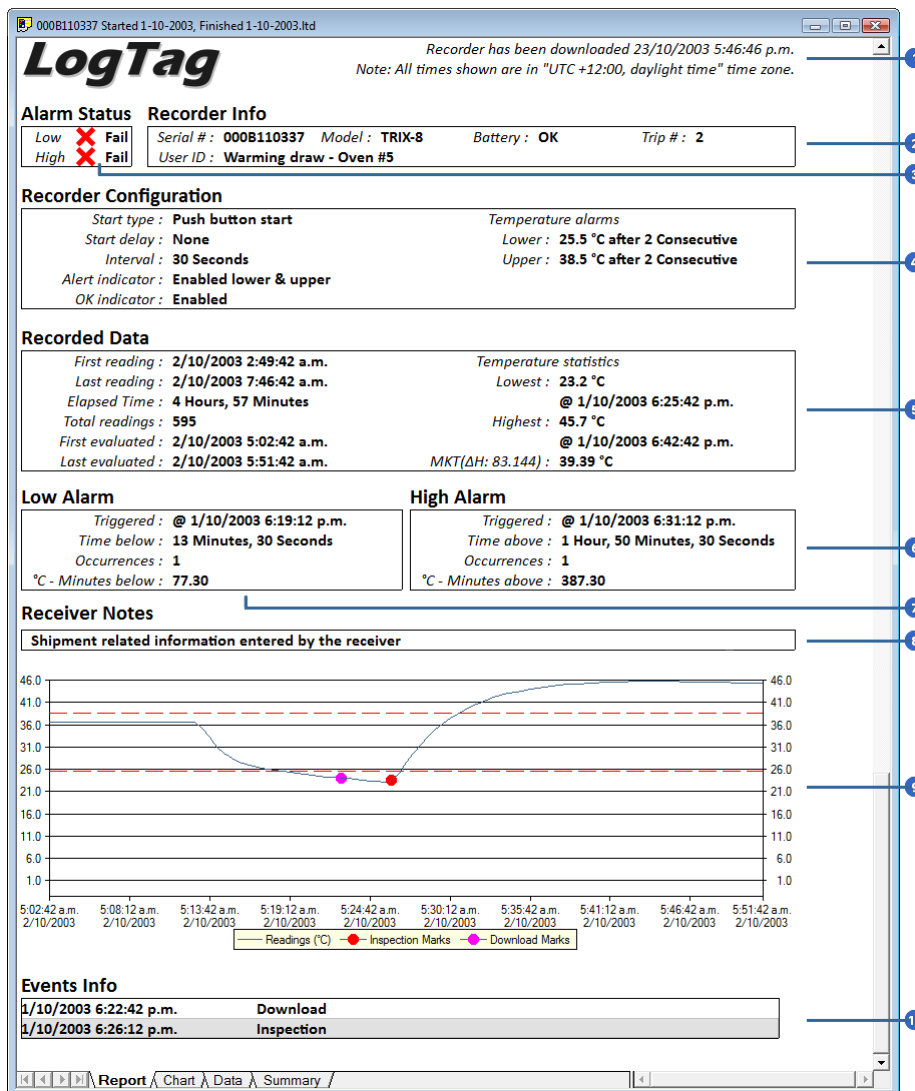


Figure 1: Sample report tab

- 1 - Download and time zone information
- 2 - General information
- 3 - Alarm pass/fail
- 4 - Configuration information
- 5 - Trip information
- 6 - High Alarm information
- 7 - Low Alarm information
- 8 - Receiver notes
- 9 - Graph area
- 10 - Event information

The graph area shows a slightly smaller version of the chart. The zoom controls are linked to the chart tab. If you zoom in to a particular area on the report's chart area, the same area will be displayed in the chart tab and vice versa. You can use the same zoom controls as in the chart, with some exceptions to the context menu controls.

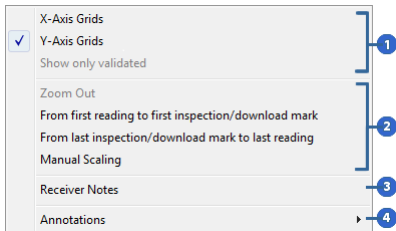
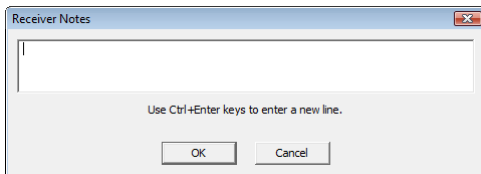


Figure 2: Report tab context menu

- 1 - Grid control
- 2 - Zoom control
- 3 - Receiver notes
- 4 - Annotations

Some of the appearance and shade controls are no longer available, however the remaining grid and zoom controls work the same as they do in the chart tab, and so does the annotation function. Annotations added in the chart tab will be displayed in the report chart and vice versa.

When you select **Receiver notes** you will be able to add a text field that is then displayed in the report's Receiver Notes section every time the file is opened.



These notes are stored in the "*.anno" file, which also holds the chart annotations. This file must be present in the same directory as the "*.ltd" file.

If you enlarge the width of the window sufficiently, the report will be displayed in landscape format.

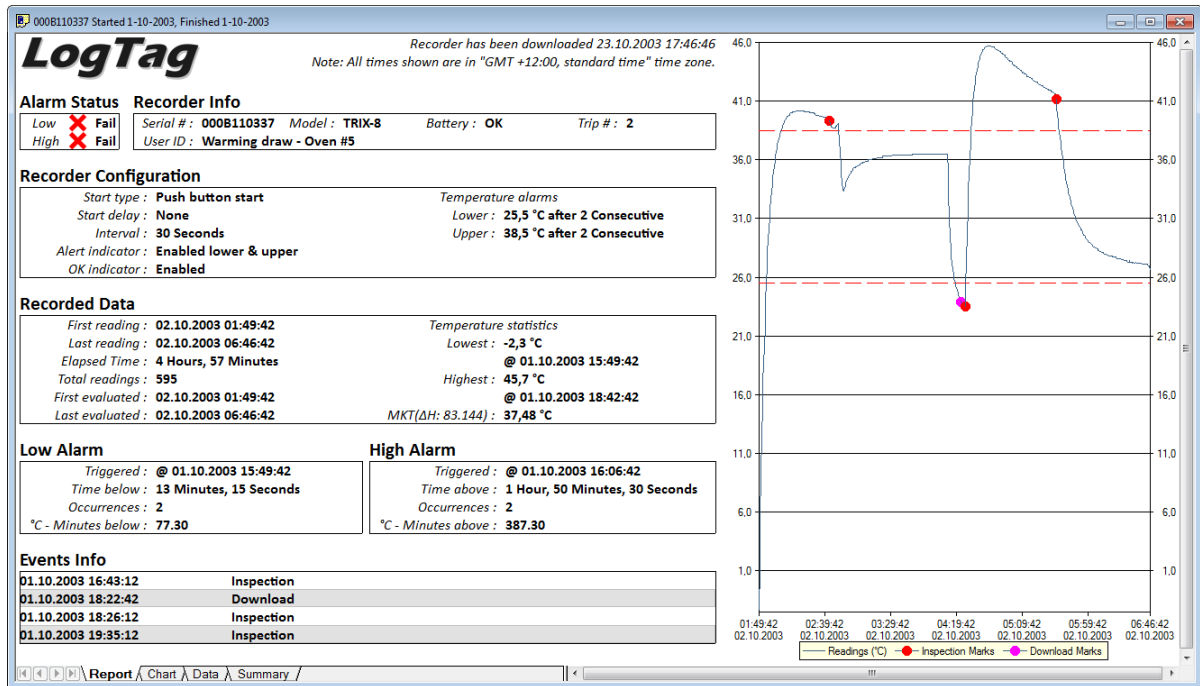


Figure 3: Report tab in landscape format

Configuration Profiles

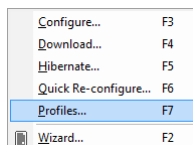
Starting with version 2.2 LogTag Analyzer provides a great way to make the task of configuring loggers over and over with the same parameters a lot simpler.

For every logger type multiple configuration profiles can be stored and retrieved later. These configuration profiles hold information such as alert limits, logging interval, number of readings to record and most of the other parameters you would typically enter during configuration.

Configuring a logger with a given profile requires only three steps:

1. Access the "Profiles" function from the LogTag menu
2. Select the profile you wish to use in the Configuration Profiles main window
3. Click on configure

The "Configuration Profiles" window is accessed through the **LogTag** menu by selecting **Profiles**.



The window that is now displayed gives you an overview of the profiles already installed as well as some controls so you can add, edit and delete profiles.

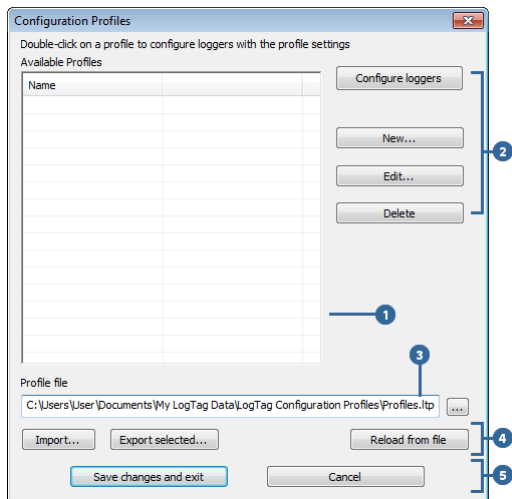


Figure 4: Profile main window

- 1 - Profile grid
- 2 - Profile control buttons
- 3 - Profile storage file path and name
- 4 - Profile file controls
- 5 - Dialogue controls

Profiles Grid

When you first select this feature the profiles grid will be empty (just like above). You will fill the grid by adding profiles or importing profiles.

Name	Model
Pool water	TRED
Onions	HAXO
Ice Cream	TRIX
Oranges	SRIC
Pool Water (Infants)	TRED
Flowers (Tulips)	HAXO
Flowers (Roses)	HAXO


Figure 5: Profiles grid

Profiles from the grid can then be used to configure loggers. A single click on the column title will sort the profile using this column. Double clicking on a profile will configure all loggers currently in connected interfaces using the parameters stored in the configuration profile. You can select multiple profiles for export or deletion when you hold down the **CTRL** key while clicking, but you cannot edit or apply more than one profile at the same time.

Profile Control Buttons

Selecting the "Configure loggers" button will configure all loggers currently in connected interfaces using the parameters stored in the configuration profile highlighted in the grid (this is the same as double clicking on the profile name).

Use the control buttons to add new profiles, and to edit or delete existing profiles.

Clicking the  button will bring up the "Edit Profile" window.

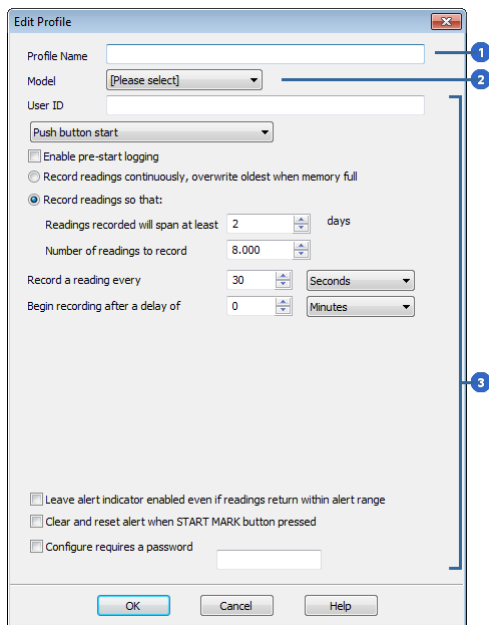
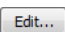
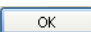

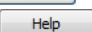


Figure 6: New Profile Window

- 1 - Profile name
- 2 - Recorder model
- 3 - Configuration parameters

This window contains all the controls you can find in the configuration window, plus one entry field at the top where you need to enter the new name of the profile, and a drop down box where you need to select the model type of the logger.


The same window will be displayed when you press the  button. Every entry field is now populated with the saved value for this profile. Any entry field can be edited, with the exception of the model type.

You can click  to save the profile,  to discard any changes, and also bring up the help screen for this window by selecting .

Profile Storage File Name and Path

The collection of profiles displayed in the profiles grid is saved in a single file on your PC, which is called the profile file. This file is typically stored in a folder called "LogTag Configuration Profiles" inside the "My LogTag Data" folder. Every time you open LogTag Analyzer this profile file is activated.

You can select alternative collections by opening different files. This can be useful if for example you want to keep different profiles for different customers, or you prefer to separate and organise your profile collections.

You can click on the  button and select a different profile file. If you have unsaved changes you will be asked to confirm if you want to first save these changes. An explorer window will then open, where you can select a new profile file.

Note: To create a new profile file, export one or more profiles to a new profile file. You can then open the new profile file and add, edit or delete profiles as usual. Alternatively, you can download an empty profile file template from http://www.logtagrecorders.com/download/document/Blank_Profile.ltp.

Profile File Controls

If you have stored your profiles in different profile files, you can transfer data between different files with the import and export buttons.

When you click on the button, an explorer style window will open. Select the profile file from which profiles will be imported and confirm your selection by clicking on . All profiles from the selected profile file will be imported into the currently active profile. If a profile is imported that has the same name as an already active profile, you need to confirm whether you wish to skip the import of this profile or overwrite the active profile with the imported profile.

You can export selected profiles to a new file by highlighting a profile and clicking the button. An explorer style window will open, where you can enter a new profile file name (the file will be created when you press) , or overwrite an existing profile. If a profile is exported, and a profile file already exists, you need to confirm whether you wish to cancel the export of this profile or overwrite the profile file. You can export more than one file at the same time by selecting the desired files while holding down the **CTRL** key.

You cannot amend a profile file by exporting a profile.

Profile Window Controls

Clicking will store the profile in the location entered above. Clicking on will discard any changes and return you to the main window.

Please note there are some restrictions when you work with configuration profiles:

Configuration profiles cannot use the date/time start mechanism. If a defined start time were to be applied to a profile, this time would most likely have passed by the time the profile is applied. The time, since this would be different for every time the profile is applied. If you need to configure a number of loggers and you want them all to start at the same time you should use the standard configuration screen and the Again button.

You cannot configure one type of logger model with a profile written for another model.

You cannot have multiple profiles with the same name.

If you have exported a profile to a profile file, cancelling the main edit window will not undo the changes.

If you try to apply a profile to a recorder with a password protected configuration, this same password must be provided in the profile. There is no separate password confirmation dialogue.

Loggers that can be upgraded to use a download password will automatically be upgraded when a profile is applied using this feature.

Sometimes a logger cannot be configured using a particular profile. In this case one of the following errors will be displayed:

"Logger does not support advanced alert settings" You have selected a profile which has separate upper and lower alert settings, but the logger you wish to configure does not support this. You will need to use a different profile, or use a different logger if this feature is important for this trip.

"Logger cannot record more than X readings"	You have selected a profile that requires the logger to take more readings than fit into its memory. You will need to use a different profile, or use a different logger if this feature is important for this trip.
"Password in profile does not match logger password"	You have selected a profile with a password, and the password currently stored in the logger is different. You will need to use the normal configuration process to remove the password; after that you can use the profile function to configure the logger with the new password. If the logger does not allow the password to be changed, you will need to use a different profile.
"A password cannot be applied to this logger"	You have selected a profile with a password, but the logger is factory configured so the user cannot change or enter a password. You will need to use a different profile that doesn't have a password protection, or use a different logger if this feature is important for this trip.
"Logger only supports latched master alarm"	Loggers typically can have a setting applied that allows an alarm to reset if conditions go back to within specification. Some older TRID30-7 loggers do not support this feature, and if you attempt to configure such a logger with a profile using this setting you will see this error. You will need to use a different profile or use a later model TRID30-7 if this feature is important for this trip.
"Profile logger type does not match"	You are trying to configure a unit with a profile that was created for another model. A profile is specific to a logger model, so you will need to use a different profile.
"Lease expired. The max. number of starts has been reached."	You are trying to configure a unit which has no more trips left. You will need to use a different logger.

Quickly re-configuring LogTags

You can now configure a LogTag[®] recorder without first displaying the configuration screen. To do this, you can use the "Quick Re-Configure" function from the LogTag menu, and you will see the "Upload configuration" screen where a recorder will simply be re-configured with the settings used for the previous trip.

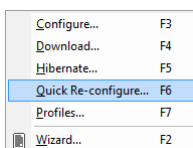


Figure 7: Quick Re-configure option through menu

You can also use the "F6" function key.

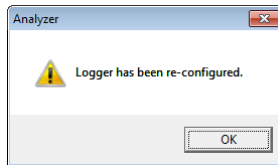
There are certain rules when using this function:

- You can use multiple interfaces. Each LogTag detected in an interface is re-configured with the same data used for its previous trip. Recorders do not have to be of the same model, and can each have different configuration settings.
- Re-configuration is only possible for recorders which used the "Push button" or the "Push button from hibernation" start method for their previous trip. If the recorder's previous trip was started by the date/time start method the quick re-configure option will result in an error message being displayed.
- If a recorder requires a password for configuration you will be requested to provide this password. If you enter an incorrect password, the configuration process will be aborted.
- If the LogTag is still logging when you reconfigure it, you will be asked to confirm whether or not you wish to stop the current trip.

Automatic Re-Configuration after Download

To re-configure a recorder even faster you can now use the "Re-configure with same settings after automatic download" option.

When you have enabled this option in **EDIT - OPTIONS - AUTOMATION**, a LogTag is automatically re-configured with the same settings as the trip just completed once its data have been downloaded (see Automation). You will receive the following feedback once the configuration is complete:



Please note this option only works when a LogTag is automatically downloaded when inserted into the interface, i.e. the "Enable automatic download of readings from LogTags" option must be enabled, and the download triggered by inserting the recorder into the interface. This does not apply when the LogTag is downloaded through the menu of by pressing F4.

A word of caution: If the LogTag you have downloaded does not have a configuration password and has also finished logging, the only visual feedback on the PC will be after the recorder has already been re-configured for a new trip. You will only be able to access the data from the trip just downloaded on the PC, but not within the recorder. Therefore it is important you make sure the file location for storing data is always accessible to avoid loss of data.

Changes to Option settings

We have made two significant changes to the options settings, one allowing you to set some custom variables in the folder name for the LogTag data files, the other in the way the data are presented when either chart or report is first displayed.

Network administrators will also be pleased to learn that automatic updates can be disabled through the registry. Please see the User Guide for more details.

Options - General Settings

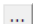
This drop down box allows you to set the default time zoom level. You can set this to:

- All readings
- From first reading to first inspection/download mark
- From last inspection/download mark to last reading

The setting you select here will apply to all currently open windows as well as to newly opened windows, where a file is opened or a recorder is downloaded.


The section about *Inspection and download mark zoom* on page 9 explains how this feature works.

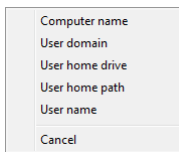
Options - File and Folder Settings - Folder

This determines the location where the files are automatically stored. The location defined here can specify a local drive path or a network drive path. UNC folder names are supported. The  button at the end of the edit control will assist you to locate the default store folder by browsing the folder structure available to you, if you choose to use it.

Since this is the default location where files are stored, this also represents the default folder that will be used when searching for files to open (through the Open command in the File menu).

You can also use the PC's environment variables to compose a user specific pathname. This is particularly of interest to network administrators who wish to create silent installations and create generic UserProfile.dat files to direct the data to a location on the local PC or a domain server.

You can insert these variables at any location in the path name, provided the final resulting name is a valid UNC folder name. Use the  button to insert following variables at the cursor:



Variable	Meaning
%COMPUTERNAME	The name of the computer as entered in the system description.
%USERDOMAIN	The domain name of the network the user is connected to.
%HOMEDRIVE	The drive letter on which the User 's documents directory is stored.
%HOMEPATH	The path (excluding the drive letter) of the user's home directory.
%USERNAME	The user' user name as required for logon.

A valid storage directory would be "%HOMEDRIVE%HOMEPATH\Documents\My LogTag Data".

Note: Some Network Attached Storage Devices (NAS Drives) use versions of SAMBA (Server Message Block) file servers which do not correctly report back whether a file exists or not. Consequently, LogTag Analyzer will overwrite without warning an already existing file with the same name, regardless of the settings made in the Automation options.

Options - Automation - FTP/SMTP settings

You can now resume interrupted FTP/SMTP activity when LogTag Analyzer is re-started. To do so, place a tick in the check box next to "Store pending uploads..."

Store pending uploads between sessions, automatically resume uploads on program startup

Inspection and download mark zoom

You can also zoom directly to certain parts of the chart by using the inspection mark zoom icons on the toolbar and in the context menu.



Zoom out

Zooms out one level of the chart in the currently active window. If you are displaying a chart and this function is not available, then all available data are already being displayed and you cannot zoom out any further.



Zoom to inspection marks

This zooms the chart so readings are shown between the oldest reading recorded and the first inspection mark that exists in the data. If this function is not available then there are no inspection marks in the data currently being displayed.

The next two commands will not be available until this command is activated.



Previous inspection mark group

This zooms the chart so readings are shown which were recorded between the first inspection mark currently being displayed and the previous inspection mark.

This function is disabled when either the oldest reading is already being displayed, or the "Zoom to inspection marks" function has not been activated.



Next inspection mark group

This zooms the chart so readings are shown which were recorded between the last inspection mark currently being displayed and the next inspection mark.

This function is disabled when either the newest reading is already being displayed, or the "Zoom to inspection marks" function has not been activated.

In addition to zooming out and manually scaling the chart the context menu gives you some additional functions not available through the toolbar.

From first reading to first inspection/download mark

This zooms the chart so readings are shown between the oldest reading recorded and the first inspection mark **or** download mark that exists in the data. This is different from the "Zoom to inspection marks" feature as it also evaluates download marks. You can use this function to look at the first set of data where a logger is downloaded more than once during a trip, for example in a cold chain transport where goods are transferred from a cargo ship to a distribution truck and you are only interested in the shipping portion of the trip.

From last inspection/download mark to last reading

This zooms the chart so readings are shown between the last inspection mark **or** download mark and the newest reading in the data. This is different from the "Zoom to inspection marks" feature as it also evaluates download marks. You can use this function to look at the last set of data where a logger is downloaded more than once during a trip, for example on a distribution truck which has multiple drop off points and you are only interested in the last portion of the trip.

If either of the two menu points are greyed out you are either already looking at this part of the data, or there are no inspection or download marks present.

In the General section of the Options you have the opportunity to define either of these two settings as the default when files are opened or recorders are downloaded. You can see in the section General Settings how this is applied.

Diagnostics

The Request Help function in the Help menu now tries to attach the contents of the logger memory to the e-mail generated. You will see following message on screen:

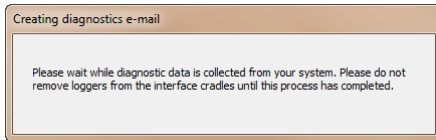


Figure 8: Diagnostic data collection

This may however not always work due to the nature of the fault.